

INTERNATIONAL CONFERENCE

ENERGY IN BUILDINGS ATHENS 2025

ΥΠΟ ΤΗΝ ΑΙΓΙΔΑ ΤΟΥ **TEE**

SATURDAY
NOVEMBER 15, 2025

- DECARBONIZATION & ENERGY SECURITY
- SUSTAINABILITY & GREEN TRANSITION
- ARTIFICIAL & BUILDING INTELLIGENCE
- ENERGY SAVING IN COMMERCIAL & INDUSTRIAL APPLICATIONS

09:00-18:00 | @ DIVANI CARAVEL HOTEL, ATHENS

COMMUNICATION SPONSORS

B2Green

T-PRESS

ΟΕΡΜ Ο
ΥΑΡΑΥ ΚΟΖ

ΚΤΙΠΙΟ
ΕΚΔΟΣΕΙΣ

ΠΡΑΣΙΝΟ 4green

GOLD SPONSOR

ARISTON
GROUP

ARISTON

WOLF

elco

AEROGAMMI S.A.

Midea | MBT
ΟΜΙΛΟΣ
ΤΟΥΡΝΙΚΙΩΤΗ

AHI
Carrier

AIRTECHNIC
www.airtechnic.gr

AC

DELPHIS
CREATIVE CLIMATE
CLINT Hisense redge

dimtech

ebc
ELECTROMECHANICAL
BUILDING
CONSULTANTS

FERNOX
MAKES WATER WORK

FUJITSU
AIRSTAGE

GEBERIT

IDATOR

interplast

Haier
KOKOTAZ

LG
Business
Solutions

Mechanical
Solutions
AQUARK

menerga
a systemair company

ITM
TRANE

prihoda

systemair

TRANE

westnet
AUX
AIR CONDITIONER

wilo

zeb
Zero Energy Building

INTERNATIONAL CONFERENCE

ENERGY IN BUILDINGS ATHENS 2025

ΥΠΟ ΤΗΝ ΑΙΓΙΔΑ ΤΟΥ TEE

SATURDAY
NOVEMBER 15, 2025

- DECARBONIZATION & ENERGY SECURITY
- SUSTAINABILITY & GREEN TRANSITION
- ARTIFICIAL & BUILDING INTELLIGENCE
- ENERGY SAVING IN COMMERCIAL & INDUSTRIAL APPLICATIONS

09:00-18:00 | @ DIVANI CARAVEL HOTEL, ATHENS

COMMUNICATION SPONSORS

B2Green

T-PRESS

ΕΡΜ Ο
ΥΡΑΥΑ ΚΟΖ

ΚΤΙΠΙΟ
ΕΚΔΟΣΕΙΣ

ΠΡΑΣΙΝΟ 4green



e-CODOMH
Cluster for Efficient and sustainable
Construction, buildings & infrastructure.

«e-CODOMH - An ecosystem for the construction sector»

Dr Constantina-Dia Andreouli

Secretary General, B.O.D. e-CODOMH/Head of Research & Development, MIRTEC

Acknowledgments

22 Business Partners (Members)

1. FIBRAN A.E.
2. ELVAL COLOUR M.A.E
3. ΕΛ.Κ.Ε.ΜΕ
4. ΜΙΧ. Ι. ΣΤΑΓΑΚΗ ΑΕΒΕ
5. NORDIA A.E. (MARMOLINE)
6. ALUMINCO A.E
7. Ν. ΜΠΑΖΙΓΟΣ ΑΒΕΕ
8. NanoPhos A.E
9. Prime Laser Technology ΑΒΕΕ
10. ΕΡΚΑΜΥΛ
11. ΕΠΑΛΜΕ (ΟΜΙΛΟΣ ΜΥΤΙΛΗΝΑΙΟΣ)
12. Ili- Con
13. DOMECON ENGINEERING AND CONSULTING
14. Tritoxo Project Management
15. Seven Sigma P.C
16. ΤΕΧΝΙΚΗ ΑΝΑΠΤΥΞΗ ΑΤΕΒΕ
17. ΕΒΕΤΑΜ
18. HERACLES (HOLCIM Group)
19. Zarifopoulos S.A.
20. KNAUF INSULATION
21. ISOMAT
22. HELLENIC HALYVOURGIA



e-CODOMH (MIRTEC, Thiva branch)
76th km of ATHENS – LAMIA NATIONAL ROAD, PO Box 150, 32009 Schimatari, Greece
TEL: +30 226230 7809, Email: info@e-codomh.gr

Associate Members

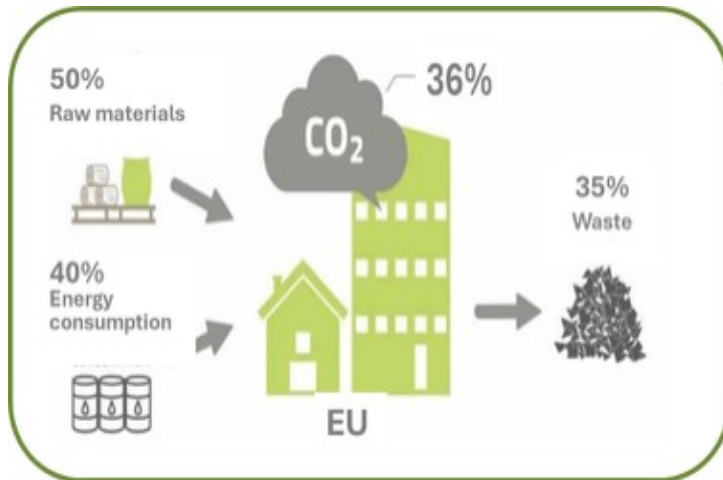
Research organizations & Associations

1. National Observatory of Athens
2. National Technical University of Athens
3. University of Thessaly
4. University of Patras
5. Democritus University of Thrace
6. Technical University of Crete
7. National Centre for Scientific Research "DEMIKRITOS"
8. Centre for Research & Technology Hellas, CERTH
9. SVSE - ASSOCIATION OF INDUSTRIES OF CENTRAL GREECE
10. CORE

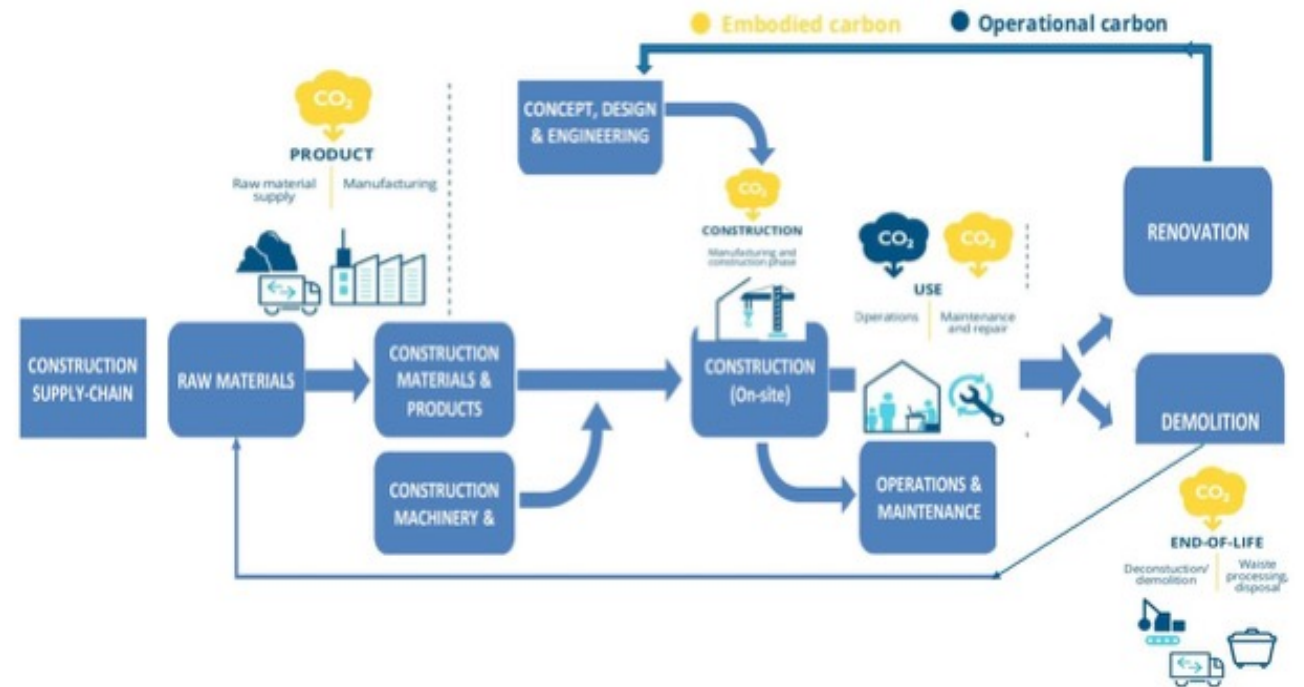
The Construction Ecosystem – Main Features

A Key Driver of the Economy and Europe's Climate-Neutral Future

- Sector with high added value
- Interconnected with many other economic activities: Manufacturing, real estate, Transport, Logistics, Energy



- Complex value chain
- Major producer of greenhouse gas emissions & waste
- Large consumer of materials & energy





A rich EU policy & regulatory landscape

A lot of regulatory changes launched since 2019...

- European Climate Law 2050 (2021/1119)
- EU taxonomy regulation for sustainable investments
- Directives on Energy Performance of Buildings and Waste
- New Construction Products Regulation (CPR-EU 2024/3110)
- EU Green Deal and Fit for 55 Package
- Energy Efficiency Directive (EED) (2023/1791)
- Renewable Energy Directive (REDII) (2023/2413)
- Waste Framework Directive (COM(2023) 420 final)
- CSRD -Corporate Sustainability Reporting Directive (2025)
- CS3D-Corporate Sustainability Due Diligence Directive (2024-2026)
- Revised Energy Performance of Buildings Directive (EU/2024/1275, EPBD) (2024-026)-Global Warming Potential (GWP).

... supported by ambitious policies, strategies & initiatives

- Circular economy action plan
- Zero Pollution Action Plan
- Renovation Wave 2030-Affordable Housing Initiative
- The New European Bauhaus (construction sustainability)
- Green Infrastructure Strategy
- Sustainable Products Initiative (Ecodesign Directive) COM(2022)142
- Adaptation Strategy
- Common European Data Spaces (cultural heritage, energy) Level(s) framework
- Transition pathway for Construction

National Laws & Strategies-Harmonization with EU directives

- National Climate Law (Law 4936/2022)
- National Strategy for Industry
- Building Renovation Strategy
- National Waste Management Plan
-



The Construction Industry in the new era

- ✓ **Key driver for the economy but needs to be transformed**

Key Needs

- ✓ Create **more resilient supply chains**
- ✓ Adapt to climate change, which means more **resilient infrastructure**
- ✓ Adopt more **sustainable ways of production**
- ✓ Become more **extroverted, green and digital**
- ✓ **Comply with Regulations and Legislation**
- ✓ Be more “**people-centric**”, provide **solutions to society & quality jobs**

IN A CLIMATE-NEUTRAL EUROPE, BUILDINGS WILL BE...



***Several links and cooperations are needed among the various stakeholders and policymakers.
They must collectively understand and address the related environmental impact.***



The role of Innovation Clusters in the EU Construction Ecosystem



- Support the implementation of EU priorities and the co-development of industrial strategy
- A powerful tool that encourages cooperation between businesses to grow and integrate into regional, European, or global value chains

Quadruple Helix model



- Multi-layered interactions between these four groups
- Active Collaboration & Participation in co-design, co-develop

e-CODOMH: Structure and Governance

- Operates as a **Non-Profit Company** (January 2022)
- The **1st Greek innovation business cluster of the construction sector** founded by dynamic Greek enterprises
- **Facilitator: EBETAM/MIRTEC.** Actively supporting its development and first steps.
- **Cluster Governance**
 - **General Assembly.** The supreme body, which consists of all organizations
 - **Board of Administrators (5).** Responsible for the administration and management of the cluster e-CODOMH
- **Members**
 - **Business Partners/Members & Associate Members**



VISION

To become **an innovative ecosystem for the Greek building materials and construction sector** acting as a catalyst for sustainable development of its members.

MISSION

- Support a new collaborative model for industry and research organizations
- Creating an added value in the Greek construction sector for Efficient and Sustainable Construction, Buildings and Infrastructure through, based on **Quality – Innovation - Knowledge - Synergies**


**Today, e-CODOMH needs to be transformed,
as a more holistic approach has emerged for the construction ecosystem**

➤ **We need to tackle together Industrial, Environmental & Societal challenges.**

Strategic Actions Axes



Business Innovation and
Sustainable Development



Industrial research and
Innovation



Regulatory Guidance of
Testing and Certification



Networking and access to
finance



Training and Up-Skills



e-CODOMH

Integration in the European Ecosystem

e-CODOMH – Member of ECTP (2024)

ECTP- European Construction Technology Platform

- Participates in shaping the EU agenda of the “European Strategy for Research & Innovation
- Promotes innovation for the industry through Networking & Collaboration
- With 160 Members in 24 countries: Businesses, Universities, Research Organizations, Associations from the construction ecosystem.

Built4People partnership

ECTP - European Commission - **World Green Building Council**

- **380M€ EU funding for projects under the B4P umbrella**
- www.built4people.eu

B4P is supporting the political Research and Innovation Priorities of the EU Commission

Targets two major challenges for the Built environment



Become more sustainable and resilient in face of climate change and biodiversity reduction



Become more 'people-centric' to improve individual well-being and social cohesion

*Focus on
Combined technological **and** social innovations*

B4P Innovation Clusters-B4PIC

- ✓ EC aims to create a strong community under the B4PP
- ✓ Supports the creation of **B4PIC**

3 B4P General Objectives:

1. **“Scientific”**: to generate holistic innovation towards sustainability
2. **“Economic”**: to revitalize the sector through decarbonization and sustainability transition
3. **“Societal”**: to induce lasting behavioral change towards sustainable living

7 B4P Specific Objectives:

- A. Develop **holistic solutions** in a systemic approach
- B. Demonstrate **overall performance in the life-cycle** perspective
- C. Demonstrate **clean energy transition** potential
- D. Demonstrate sector **decarbonization pathways**
- E. Demonstrate **sustainable, circular** business and value chain
- F. Demonstrate **affordability and cost-effectiveness**
- G. Demonstrate **no trade-offs** on economy, comfort, health, functions, cultural heritage

New European Bauhaus

NEB Core Values

- Beautiful
- Sustainable
- Together

NEB Working Principles

- Participatory process
- Multi-level engagement
- Transdisciplinary approach

B4PIC Charter & Maturity Framework

- ✓ **The B4PICs** that sign the Charter, assure the exchange of good practices and foster their collaboration.
- ✓ By following a **Maturity Framework** they develop or update their strategy and roadmap to evolve in line with **Six B4PIC success factors**, while remaining aligned with the needs of their members.

Six B4PIC success factors

- (1) Whole value chain*
- (2) Target Multi-objectives*
- (3) Cross-sectoral integration
- (4) Locally anchored with European outreach
- (5) Cross-border collaboration
- (6) Access to testbeds and demonstration spaces

**mandatory*

- e-CODOMH is a **Built4People Innovation Cluster** (B4PIC) as of March 2025
- Other 24 clusters in Europe from 14 countries

e-CODOMH participates in project STAR*track

Support and networks **To Accelerate the**
construction and **Renovation innovation track** to market

| 15 Partners + 8 Affiliated Entities | May 2024 – Apr.2027 | Website: www.built4people.eu/startrack-project/

- Main target: to activate and mature B4PICs.
- To foster collaboration among European clusters to foster synergies
- To Support their members in advancing sustainable, human-centered innovation across regional value chains

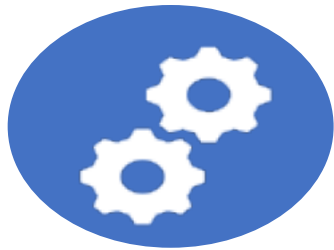


Benefits for e-CODOMH as a B4PIC and for its members



- Increase Visibility in High-level European Networks
- Communicate Key messages to the European Commission
- Beneficiate from New services to engage members
- Take broader approach to research and Innovation
- Attract new resources and funding
- Meet with other national clusters





Active collaboration for our members & Participation in funded projects

1st National funded collaborative project

e-CODOMH B2B - (NSRF 2014-2020, ΓΓ2CL-0348775) -Budget/Funding: 1.695.630 €/1.296.365 €



The active collaboration of members, along with activities that foster dialogue with all stakeholders, is a continuous process for e-CODOMH

“The way forward is based on synergies and Innovation through Collaboration”

INTERNATIONAL CONFERENCE

ENERGY IN BUILDINGS ATHENS 2025

ΥΠΟ ΤΗΝ ΑΙΓΙΔΑ ΤΟΥ **TEE**

THANK YOU! Q & A

Dr Constantina-Dia ANDREOULI
andreouli.dia@e-codomh.gr

09:00-18:00 | @ DIVANI CARAVEL HOTEL, ATHENS

COMMUNICATION SPONSORS

B2Green

T-PRESS

ΕΡΜ Ο
ΥΡΑΥΑ ΚΟΖ

ΚΤΙΠΙΟ
ΕΚΔΟΣΕΙΣ

ΠΡΑΣΙΝΟ www.4green.gr

GOLD SPONSOR

ARISTON
GROUP

ARISTON

WOLF

elco

AEROGRAMMI S.A.

Midea | MBT
ΟΜΙΛΟΣ
ΤΟΥΡΝΙΚΙΩΤΗ

AHI
Carrier

AIRTECHNIC
www.airtechnic.gr

AC

DELPHIS
CREATIVE CLIMATE
CLINT Hisense redge

dimtech

ebc
ELECTROMECHANICAL
BUILDING
CONSULTANTS

FERNOX
MAKES WATER WORK

FUJITSU
AIRSTAGE

GEBERIT IDATOR

interplast

Haier
KOKOTAZ

LG Business
Solutions

Mechanical
Solutions
AQUARK

menerga
a systemair company

ITM
ΣΥΣΤΗΜΑΤΑ ΜΑΚΡΟΘΕΡΜΗΣ

HELLAS
prihoda

systemair

TRANE

westnet
AUX
AIR CONDITIONER

wilo

zeb
Zero Energy Building